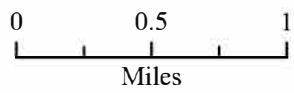


GULL LAKE TRAIL MAP

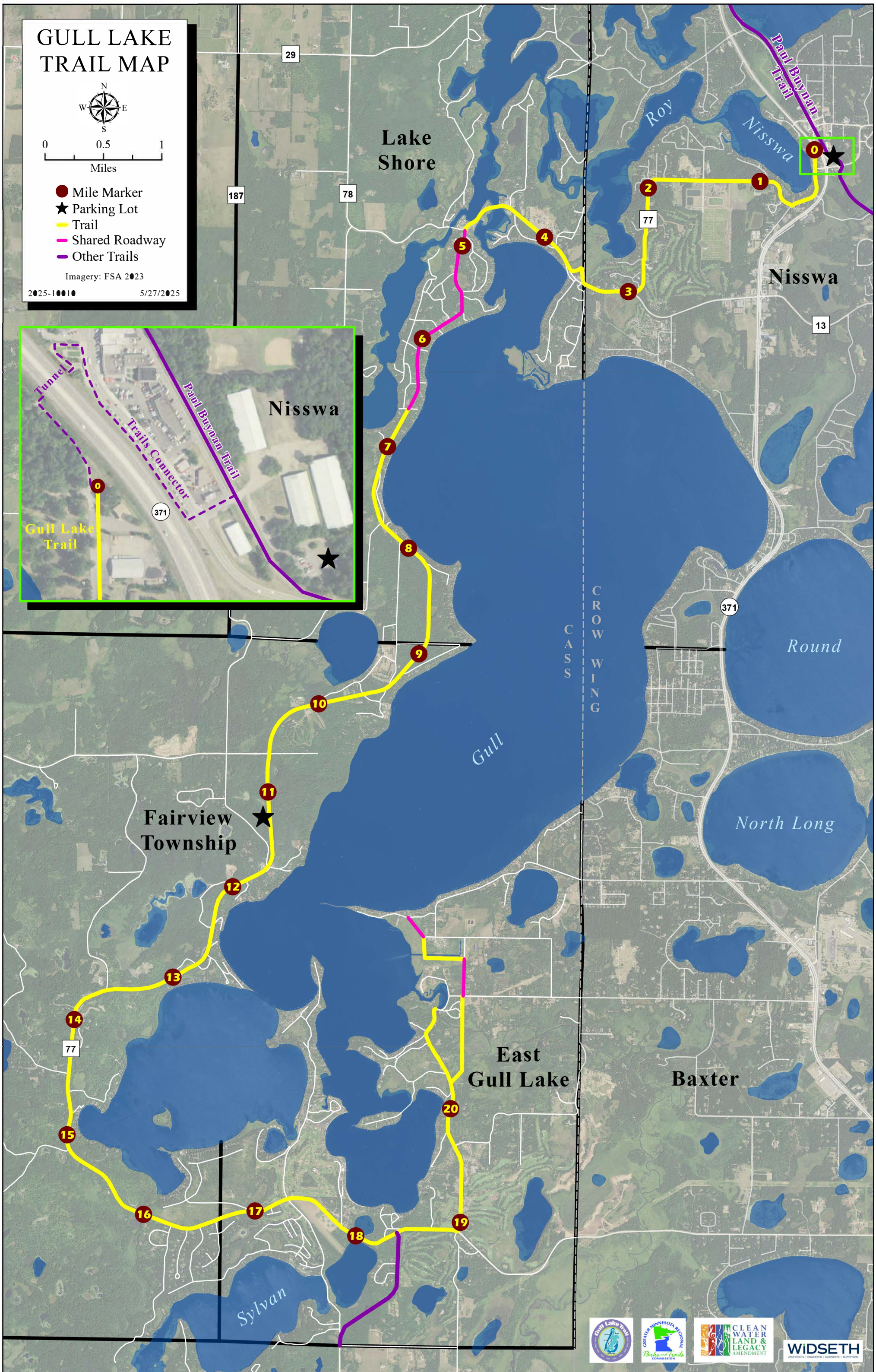


- Mile Marker
- ★ Parking Lot
- Trail
- Shared Roadway
- Other Trails

Imagery: FSA 2023

2025-10010

5/27/2025



Area Attractions


- Gull Lake Recreational Area
- Pillsbury State Forest
- Fritz Loven Park
- Paul Bunyan Trail
- DNR boat landings
- Dining, golf, and shopping



Contact Us


East Gull Lake

 www.eastgulllake.govoffice.com

 (218) 828 - 9279


Fairview Township

 www.fairviewtownshipmn.com

 (218) 825 - 9322


Lake Shore

 www.cityoflakeshore.gov

 (218) 963 - 2148

Nisswa

 www.cityofnisswa.gov

 (218) 963 - 4444



Creating
Connecting
Coordinating

In the heart of the Brainerd Lakes Area is the Gull Lake Trail. This 21-mile, 10 foot wide, multi-use paved trail, connects you to some of the best amenities the area has to offer.

This trail allows all ages and abilities an opportunity to be active and enjoy the natural surroundings.

With most of the trail being separated from traffic, it provides a safe route to access state trails, parks, lakes, resorts, shops, and restaurants throughout the area.